



**INDUSTRIAL TECTONICS INC**  
 7222 W. Huron River Drive  
 Dexter, MI 48130



## SINGLE END PLUG GAGE -- WITH HANDLE

Please answer all questions completely by filling in the information in the "Answer" column below. Reference: General Drawing 15SEGAG.

<u>QUESTION</u>	<u>ANSWER</u>																				
1. What is dimension "A" the Ball Size?																					
2. Is the Ball a "GO", "NO GO", or a "+/-" tolerance?																					
3. What Class – "XX", "X", "Y", or "Z" ?  <u>BALL TOLERANCE FOR SIZE .050" - .750" DIAMETER</u> <table style="margin-left: 40px;"> <thead> <tr> <th></th> <th>Class XX</th> <th>Class X</th> <th>Class Y</th> <th>Class Z</th> </tr> </thead> <tbody> <tr> <td><b>GO</b></td> <td>+0.00002</td> <td>+0.00004</td> <td>+0.00007</td> <td>+0.00010</td> </tr> <tr> <td><b>NO-GO</b></td> <td>-0.00002</td> <td>-0.00004</td> <td>-0.00007</td> <td>-0.00010</td> </tr> <tr> <td><b>STD</b></td> <td>+/-0.00001</td> <td>+/-0.00002</td> <td>+/-0.000035</td> <td>+/-0.00005</td> </tr> </tbody> </table>		Class XX	Class X	Class Y	Class Z	<b>GO</b>	+0.00002	+0.00004	+0.00007	+0.00010	<b>NO-GO</b>	-0.00002	-0.00004	-0.00007	-0.00010	<b>STD</b>	+/-0.00001	+/-0.00002	+/-0.000035	+/-0.00005	
	Class XX	Class X	Class Y	Class Z																	
<b>GO</b>	+0.00002	+0.00004	+0.00007	+0.00010																	
<b>NO-GO</b>	-0.00002	-0.00004	-0.00007	-0.00010																	
<b>STD</b>	+/-0.00001	+/-0.00002	+/-0.000035	+/-0.00005																	
4. What is the "shank length" dimension and tolerance from the bottom of the ball to the end of the stem? If not specified the shank length will be per the standard shank length on the ITI drawing. Typically this leaves 1" from the bottom of the ball to the handle.																					
5. What is the "shank diameter" dimension and tolerance? If not specified the shank diameter will be per the standard shank diameter on the ITI drawing.																					
6. Bushings and handles will be selected by Engineering based on stem diameter.																					
7. Do you required special markings or labeling? If so, please specify.  Our standard marking on gage handles is the ball diameter (s) and the designation of "GO" or "NO GO".																					



**INDUSTRIAL TECTONICS INC**  
 7222 W. Huron River Drive  
 Dexter, MI 48130



**RETENTION OF LEGENDS**

The recipient of this document shall not remove or alter any legend and all legends shall be included on any portion or whole reproduction of this document.

**CONFIDENTIALITY STATEMENT AND DISCLAIMER**

This document embodies CONFIDENTIAL and PROPRIETARY design information originated by INDUSTRIAL TECTONICS INC. (hereinafter "ITI"). All design, manufacturing, reproduction, use and sale rights regarding this document are expressly reserved by ITI. This document is submitted under a confidential relationship for a specific purpose, and the recipient agrees by accepting this document not to supply or disclose any information regarding it to any unauthorized person, or organization, or to incorporate in any other projects any special features peculiar to the design illustrated in this document without the express written consent of ITI. All patent rights to the design illustrated in this document are expressly reserved by ITI. All copyrights in this document are expressly reserved by ITI. This document is protected under the copyright laws of the United States as an unpublished work. Possession of this document confers no rights to use the information contained therein for manufacturing purposes, and ITI MAKES NO WARRANTY THAT SUCH INFORMATION IS COMPLETE OR THAT ANYTHING PRESENTED IS FIT FOR ANY PARTICULAR PURPOSE.

CUSTOMER APPROVAL: \_\_\_\_\_  
 SALES ORDER NUMBER: \_\_\_\_\_  
 PART NUMBER: \_\_\_\_\_  
 SALES ORDER DUE DATE: \_\_\_\_\_  
 SALES COORDINATOR: \_\_\_\_\_ DATE: \_\_\_\_\_  
 QUANTITY NEEDED: \_\_\_\_\_  
 ADDITIONAL INSTRUCTIONS: \_\_\_\_\_

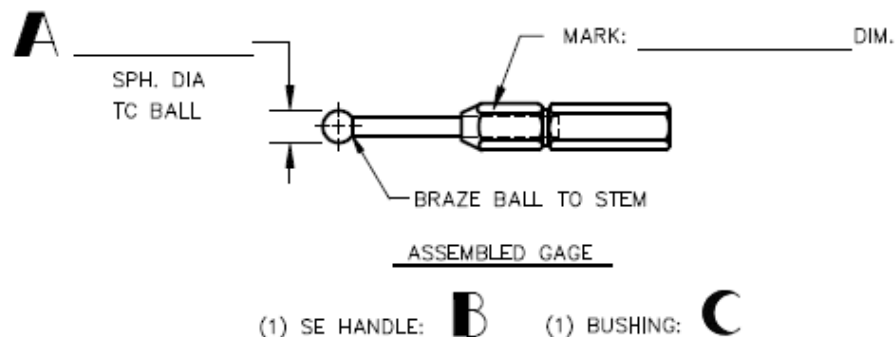
REVISIONS					
LET.	DESCRIPTION	BY	DATE	CHK'D	DATE
A	REVISED	RWH	9/97	RWH	9/97

	DATE	INITIAL
STKROOM ISSUE		
GAGE SIZE *		
MANUFACTURING		
GAGE SIZE *		
QUALITY CONTROL		
VISUAL INSPECTION		
SHIPPING		

\* = ATTACH GAGE TAPE TO PRINT

BALL TOLERANCE FOR SIZE .050 - .750 DIAMETER				
	CLASS XX	CLASS X	CLASS Y	CLASS Z
"GO"	+ .00002	+ .00004	+ .00007	+ .00010
"NO-GO"	- .00002	- .00004	- .00007	- .00010
"STD"	+/- .00001	+/- .00002	+/- .000035	+/- .00005

A	B	C	SHANK P/N	SHANK DIA.	SHANK LENGTH
.0500 - .0900	1W	045	3150021	.045	2.88
.0630 - .1250	1W	065	3150022	.065	
.0940 - .1920	2W	096	3150023	.093	
.1570 - .3120	2W	159	3150024	.156	3.44
.1880 - .3750	3W	188	3150025	.187	
.2510 - .5000	3W	252	3150026	.250	
.3760 - .7500	4W	382	3150027	.375	



UNLESS OTHERWISE SPECIFIED TOLERANCES ARE:  
 FRACTIONS= ± .XX=±. 010  
 ANGLES= ± 1° .XXX=± 005  
 BREAK ALL SHARP CORNERS: .02 x 45°

DRAWN	CHECKED
HECKAMAN	JCC
10-13-93	10-13-93
SCALE NONE	REQ'D.
MATERIAL SEE ABOVE	
DO NOT SCALE	

**INDUSTRIAL TECTONICS INC.**  
 A KAYDON COMPANY DEXTER, MICHIGAN

(15'S) SINGLE END PLUG GAGES (TAB.)

SHEET NUMBER 1 OF 1	
PART NUMBER 15SEGAG	REV. A